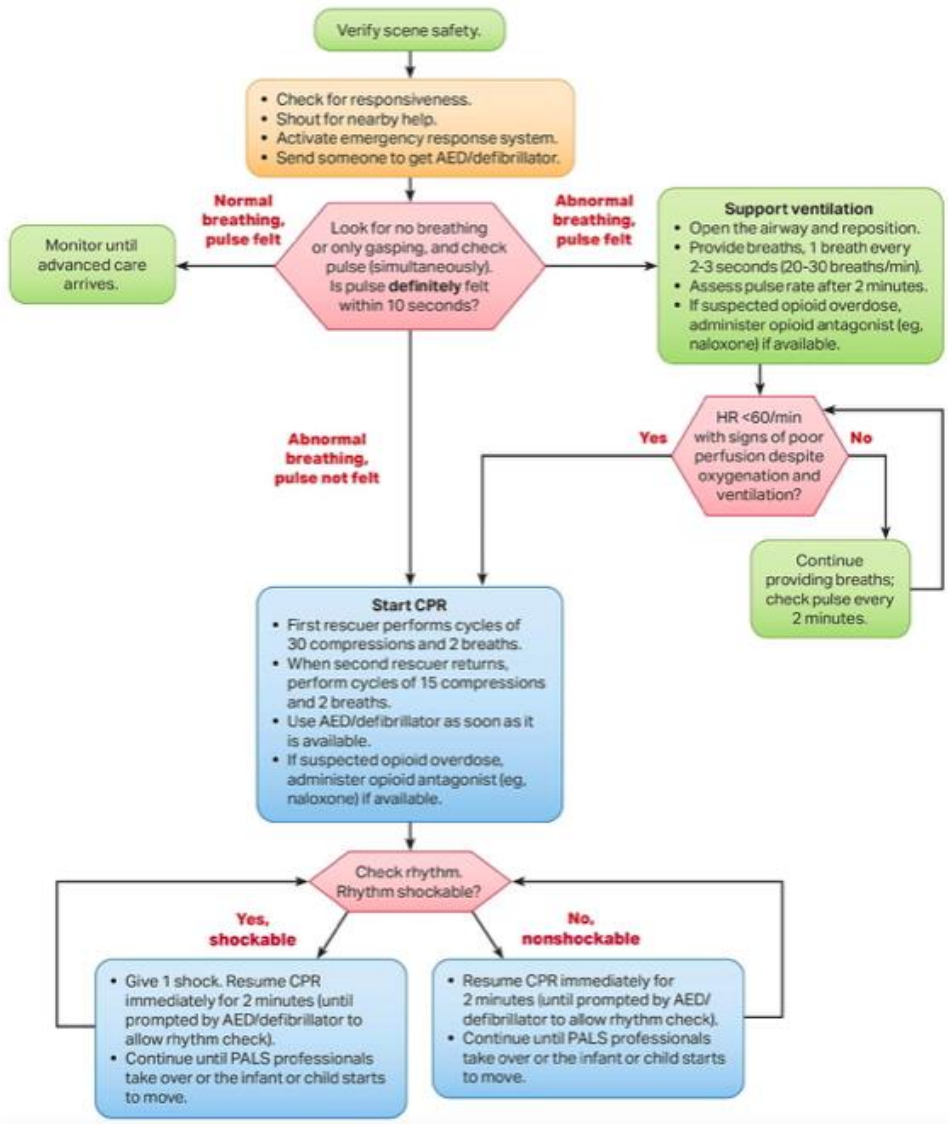




# PALS Basic Life Support Guide

Pediatric Basic Life Support Algorithm (Infants to Puberty)  
for Health Care Professionals—2 or More Rescuers



- Check for responsiveness
- Call for help!
- Send for AED/defibrillator
- If patient has pulse but abnormal breathing, open the airway and reposition. Give rescue breaths every 2-3 seconds. Use oxygen as soon as available
- If no pulse, or if the heart rate is less than 60 with signs of poor perfusion, start CPR – 100-120 compressions/minute
  - Use heel of one hand or two thumb-encircling hands technique
  - If no advanced airway, use compression/ventilation ratio of:
    - 15:2 if 2 rescuers (pre-puberty)
    - 30:2 if 2 rescuers (post-puberty onset) or if 1 rescuer
  - If patient has advanced airway, give breaths every 2-3 seconds during CPR
- Use AED as soon as available. If defibrillation needed, deliver 1st shock at 2J/kg, second and subsequent shocks at least 4J/kg
- Resume CPR for 2 minutes until time for rhythm recheck, or until child starts to move
- Assess need to move to Pediatric Advanced Life Support Algorithm